

Yard Duty and Supervision Policy

Version: 01

Approval Date: 2022

Date	Version	Section/s	Reason/Nature for Amendment
2014	1.0	All	Draft and ratified
2017			Review and ratify
2019		All	Review / ratify
2022	2.0	All	Reviewed, updated

YARD DUTY AND SUPERVISION POLICY



Help for non-English speakers

If you need help to understand the information in this policy please contact (03) 5968 4734 or macclesfield.ps@education.vic.gov.au

PURPOSE

To ensure school staff understand their supervision and yard duty responsibilities.

SCOPE

This policy applies to all teaching and non-teaching staff at Macclesfield Primary School, including education support staff, casual relief teachers and visiting teachers.

POLICY

Appropriate supervision is an important strategy to monitor student behaviour and enables staff to identify and respond to possible risks at school as they arise. It also plays a vital role in helping schools to discharge their duty of care to students.

The Principal is responsible for ensuring that there is a well organised and responsive system of supervision and yard duty in place during school hours, before and after school, and on school excursions and camps and other school activities.

School staff are responsible for following reasonable and lawful instructions from the Principal, including instructions to provide supervision to students at specific dates, times and places. Supervision should be undertaken in a way that identifies and mitigates risks to child safety.

Before and after school

Macclesfield Primary School's grounds are supervised by school staff from 8.45am until 3.45pm. Outside of these hours, school staff will not be available to supervise students.

From 8.45am, children will walk to their classrooms to set up for the day. Children who arrive before 8.45am will be directed to wait in the office until a bell rings at 8.45am, signalling the classrooms are ready with teachers to greet and supervise children.

Parents and carers will be advised through the newsletter that they should not allow their children to attend Macclesfield Primary School outside of these hours

Before and After School Care is available from 7.00am to 8.45 am each morning, and from 3.45pm to 6.00pm each school day afternoon. Families will be encouraged to contact the office on 5968 4734 for more information about the before and after school care facilities available to our school community.

If a student is not collected before supervision finishes at the end of the day, the Principal or nominee staff member will consider whether it is appropriate to:

- attempt to contact the parents/carers
- attempt to contact the emergency contacts
- place the student in an out of school hours care program (if available and the parent consents)
- contact Victoria Police and/or Child Protection to arrange for the supervision, care and protection of the student.

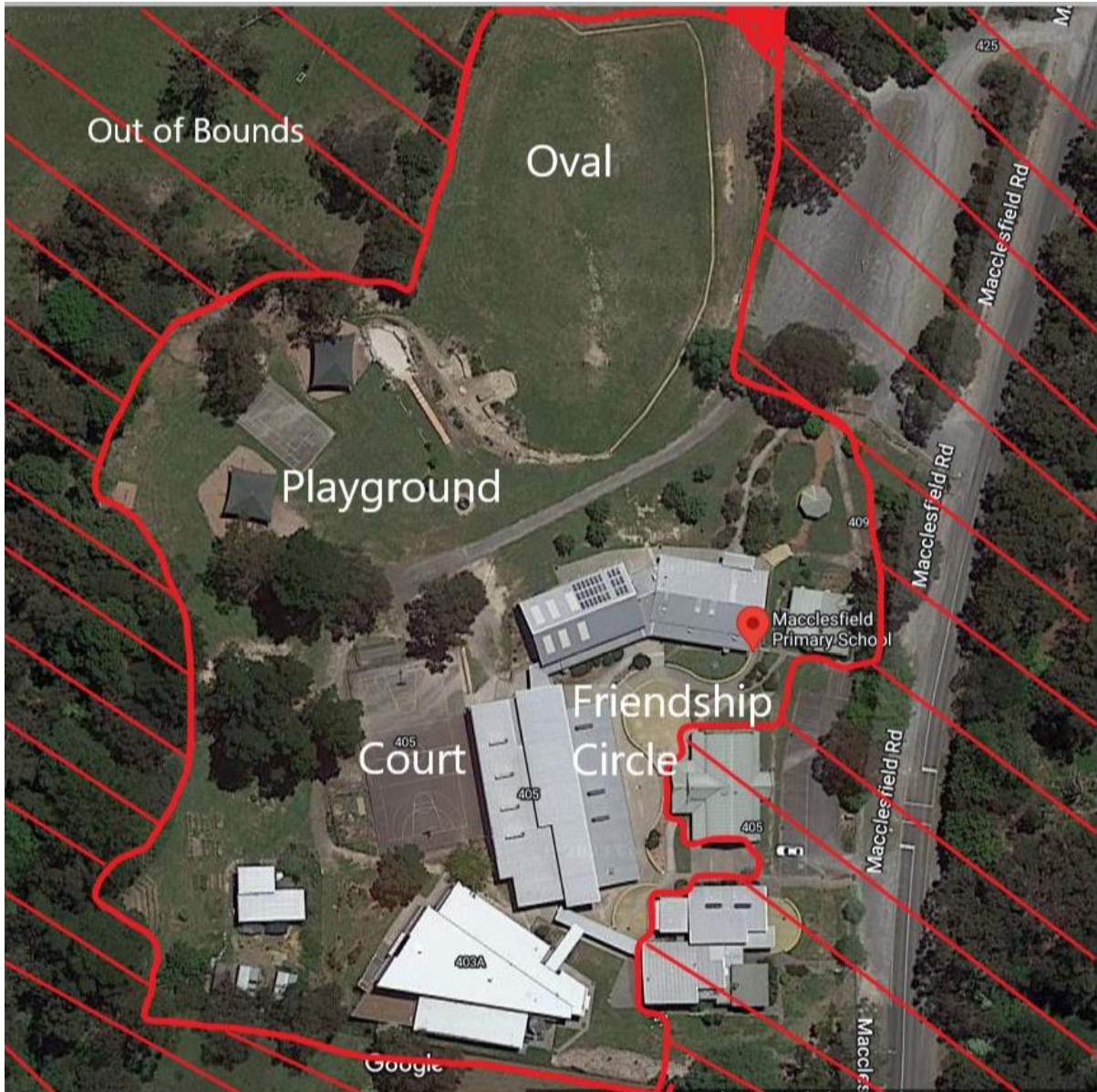
Yard duty

All staff at Macclesfield Primary School are expected to assist with yard duty supervision and will be included in the weekly roster.

The Leading Teacher and Principal is responsible for preparing and communicating the yard duty roster on a regular basis. At Macclesfield Primary School, staff are strongly encouraged to actively supervise different locations of the school that are in high use, and identified as problematic areas.

Yard duty:

Our school does not enforce yard duty zones as the need for active supervision requires staff to monitor play and engagement across the school. High risk areas that benefit from regular supervision include:



The Oval

The basketball court

The friendship circle

The cubby building area

Behind the Enviro Centre.

Teachers are expected to monitor these sites and be aware of locations of other supervising staff to ensure the school is supervised appropriately.

Yard duty equipment

School staff must:

- wear a provided safety/hi-vis vest whilst on yard duty. Safety/hi-vis vests will be stored in the staff room

- carry the yard duty first aid bag at all times during supervision. The yard duty first aid bag will be stored in the staff room.
- Be familiar with the yard duty information pack containing student health and safety information stored in the staff room and to be aware of any information relating to student health and safety such as frequent absconders, parents who pose a serious risk to safety etc .

Yard duty equipment must be returned after the period of supervision or handed to the relieving staff member.

Yard duty responsibilities

Staff who are rostered for yard duty must remain in the designated area until they are replaced by a relieving staff member.

During yard duty, supervising school staff must:

- methodically move around the playground ensuring active supervision of all students.
- where safe to do so, approach any unknown visitor who is observed on school grounds without a clear legitimate purpose, and ensure they have a visitor pass and have signed in;
- be alert and vigilant
- intervene immediately if potentially dangerous or inappropriate behaviour is observed in the yard
- enforce behavioural standards and implement appropriate consequences for breaches of safety rules, in accordance with any relevant disciplinary measures set out in the school's Student Wellbeing and engagement policy
- ensure that students who require first aid assistance receive it as soon as practicable
- log any incidents or near misses as appropriate in the sick bay and on Compass/Edusafe.

If being relieved of their yard duty shift by another staff member (for example, where the shift is 'split' into 2 consecutive time periods), the staff member must ensure that a brief but adequate verbal 'handover' is given to the relieving staff member in relation to any issues which may have arisen during the first shift.

If the supervising staff member is unable to conduct yard duty at the designated time, they should contact the Principal with as much notice as possible prior to the relevant yard duty shift to ensure that alternative arrangements are made.

If the supervising staff member needs to leave yard duty during the allocated time, they should contact the a teacher but should not leave the designated area until the relieving staff member has arrived in the designated area.

If the relieving staff member does not arrive for yard duty, the staff member currently on duty should send a message to the office to organise replacement and not leave the designated area until a relieving staff member has arrived.

Students will be encouraged to speak to the supervising yard duty staff member if they require assistance during recess or lunchtime.

Classroom

The classroom teacher is responsible for the supervision of all students in their care during class.

If a teacher needs to leave the classroom unattended at any time during a lesson, they should first contact the teacher next door or the office for assistance. The teacher should then wait until a replacement staff member has arrived at the classroom before leaving.

School activities, camps and excursions

The Principal and leadership team are responsible for ensuring that students are appropriately supervised during all school activities, camps and excursions, including when external providers are engaged to conduct part or all of the activity. Appropriate supervision will be planned for school activities, camps and excursions on an individual basis, depending on the activities to be undertaken and the level of potential risk involved, and will follow the supervision requirements in the Department of Education and Training [Excursions Policy](#).

Digital devices and virtual classroom

Macclesfield Primary School follows the Department's [Cybersafety and Responsible Use of Technologies Policy](#) with respect to supervision of students using digital devices. We use resources such as E-Safety Commission and the Cyber-Safety resources to promote consistent expectations are technology use.

Students requiring additional supervision support

Sometimes students will require additional supervision, such as students with disability or other additional needs. In these cases, the Principal or delegate will ensure arrangements are made to roster additional staff as required. This may include on yard duty, in the classroom or during school activities.

Supervision of student in emergency operating environments

In emergency circumstances our school will follow our Emergency Management Plan, including with respect to supervision.

In the event of any mandatory period of remote or flexible learning our School will follow the operations guidance issued by the Department.

COMMUNICATION

This policy will be communicated to our school community in the following ways:

- Included in staff induction processes
- Discussed at staff briefings or meetings, as required
- Included in our staff handbook
- Made available in hard copy from school administration upon request

Information for parents and students on supervision before and after school is available on our school website and reminders about supervision are included in regular newsletter updates.

FURTHER INFORMATION AND RESOURCES

- the Department's Policy and Advisory Library (PAL):
 - [Child Safe Standards](#)
 - [Cybersafety and Responsible Use of Technologies](#)

- [Duty of Care](#)
- [Excursions](#)
- [Supervision of Students](#)
- [Visitors in Schools](#)

POLICY REVIEW AND APPROVAL

Policy last reviewed	December 2022
Approved by	Principal
Next scheduled review date	December 2024

This policy will also be updated if significant changes are made to school grounds that require a revision of Macclesfield Primary School yard duty and supervision arrangements.